

PERMA-STRAIGHT I



L/480 Live Load • Glue/Nailed Floors • Allowable Spans 40 psf LL + 10 psf DL

Depth	Designation	SIMPLE SPAN				MULTIPLE SPAN			
		12" o.c.	16" o.c.	19.2" o.c.	24" o.c.	12" o.c.	16" o.c.	19.2" o.c.	24" o.c.
9-1/2"	SI/PRI-40	18'-0"	16'-5"	15'-6"	14'-6"	19'-7"	17'-11"	16'-5"	14'-8"
	SI/PRI-60	18'-11"	17'-4"	15'-9"	15'-3"	20'-8"	18'-10"	17'-5"	16'-4"
11-7/8"	SI/PRI-40	21'-5"	19'-7"	18'-6"	16'-9"	23'-5"	20'-6"	18'-9"	16'-9"
	SI/PRI-60	22'-7"	20'-8"	19'-4"	18'-0"	24'-8"	22'-6"	20'-7"	18'-7"
	SI/PRI-80	24'-11"	22'-8"	21'-4"	19'-10"	27'-1"	24'-8"	23'-1"	21'-7"
14"	SI/PRI-60	25'-9"	23'-6"	22'-4"	20'-8"	28'-0"	25'-7"	24'-1"	19'-9"
	SI/PRI-80	28'-3"	25'-9"	24'-3"	22'-7"	30'-10"	28'-0"	25'-9"	23'-1"
16"	SI/PRI-60	28'-6"	26'-0"	24'-7"	22'-10"	31'-1"	28'-4"	24'-9"	19'-9"
	SI/PRI-80	31'-4"	28'-6"	26'-10"	25'-0"	34'-2"	31'-1"	29'-3"	23'-11"

NOTES

A. Minimum bearing is 1-3/4" at end supports and 3-1/2" at intermediate supports.

B. Bearing stiffeners are not required unless needed for hangers.

C. Spans are based on uniform loads.

D. Spans assume glued-nailed sheathing meeting APA Rated Sheathing or STURD-I-FLOOR (PRP-108, PS 1, or PS 2), with minimum thickness of 19/32" for spacing ≤ 19.2" o.c. and 23/32" for 24" o.c.; adhesive must meet APA AFG-01 or ASTM D3498, and spans must be reduced by 1' if sheathing is nailed-only.

Dimensionally Stable

Lightweight

Design Flexible

Simple to Install

Resource Friendly



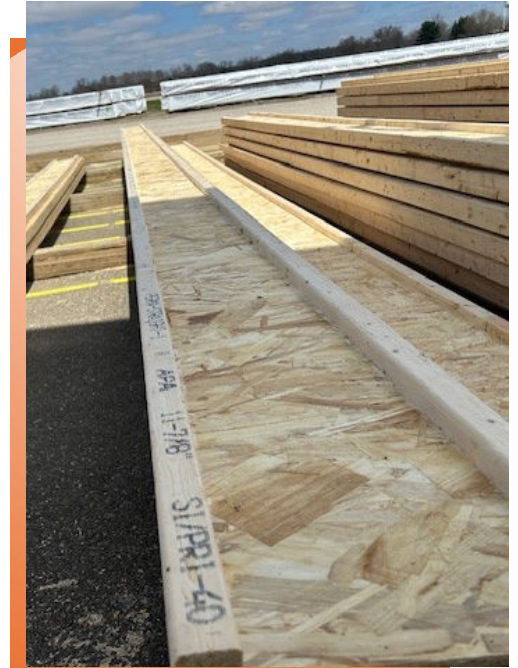
PERMA-STRAIGHT I

APA Quality Assurance

All Perma-Straight I-joists are manufactured in accordance with the American Plywood Association (APA) and Engineered Wood Association (EWS) Performance-Rated I-Joist Standard, established in 1997. This standard provides a reliable span rating system specifically for I-joists used in residential construction.

APA Performance-Rated I-Joists (PRIs) follow consistent load/span tables, standardized installation guidelines, and uniform engineering design values. Each joist is stamped with its span rating, indicating how far it can span at a given spacing under uniform loading conditions. This stamp serves as a quick reference for designers and building code officials during inspection.

The APA trademark signifies superior I-joist quality and reliable performance. Every Perma-Straight I product is manufactured in compliance with the rigorous standards established by APA's quality assurance program.

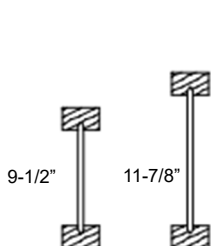


Product Warranty

Perma-Straight I's are warranted to be free from manufacturers' defects or errors in workmanship and material in accordance with our specifications. Furthermore, when correctly installed Perma-Straight I's will meet or exceed their design specifications for the normal life of the structure.

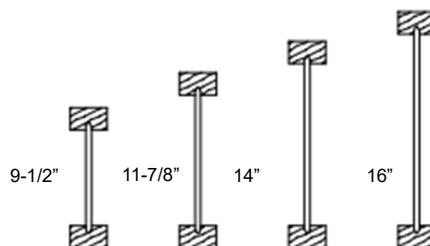
SI/PRI-40

2.5" flange – 1650f



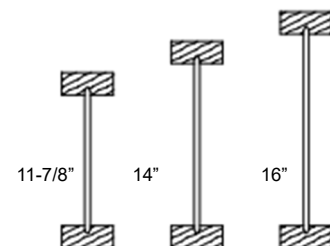
SI/PRI-60

2.5" flange – 2100f



SI/PRI-80

3.5" flange – 2100f



Perma-Straight I

6855 Chestnut Ridge Road
Beach City, OH 44608

888.756.6779 • 330.756.2255

<https://www.starktruss.com/products/lvl-and-i-joist/>