

The Wide Flange Solution

PERMA-STRAIGHT I



I-JOISTS for Residential Floor Systems

Allowable Spans for **APA/EWS Performance Rated I-joists**

L/480 Live Load • Glue/Nailed Floors • Allowable Spans 40 psf LL + 10 psf DL

Depth	Designation	SIMPLE SPAN				MULTIPLE SPAN			
		12" oc	16" oc	19.2" oc	24" oc	12" oc	16" oc	19.2" oc	24" oc
9-1/2"	PRI-40	18'-0"	16'-5"	15'-6"	14'-6"	19'-7"	17'-11"	16'-4"	14'-7"
	PRI-60	18'-11"	17'-4"	16'-4"	15'-3"	20'-8"	18'-10"	17'-9"	16'-6"
11-7/8"	PRI-40	21'-5"	19'-7"	18'-6"	16'-8"	23'-5"	20'-5"	18'-7"	16'-7"
	PRI-60	22'-7"	20'-8"	19'-6"	18'-2"	24'-8"	22'-6"	21'-2"	19'-7"
	PRI-80	24'-11"	22'-8"	21'-4"	19'-10"	27'-1"	24'-8"	23'-3"	21'-7"
14"	PRI-60	25'-9"	23'-6"	22'-2"	20'-8"	28'-0"	25'-7"	24'-1"	19'-9"
	PRI-80	28'-3"	25'-9"	24'-3"	22'-7"	30'-10"	28'-0"	26'-5"	23'-11"
16"	PRI-60	28'-6"	26'-0"	24'-7"	22'-10"	31'-1"	28'-4"	24'-9"	19'-9"
	PRI-80	31'-4"	28'-6"	26'-10"	25'-0"	34'-2"	31'-1"	29'-3"	23'-11"

Dimensionally Stable

Lightweight

Design Flexibility

Simple to Install

Resource Friendly

Notes

- Min. bearing length: 1-3/4" End bearings, 3-1/2"-Intermediate bearings.
- Bearing stiffeners not required when I-joists are used with spans & spacings given in this table, except as required for hangers.
- Spans noted in above chart are based on uniform loads.
- Spans are based on a composite floor with glued-nailed sheathing meeting the requirements for APA Rated Sheathing or APA Rated STURD-I-FLOOR conforming to PRP-108, PS I, or PS 2 with a minimum thickness of 19/32 inches (40/20 or 20 oc) for a joist spacing of 19.2 inches or less, or 23/32 (48/24 or 24 oc) for a joist spacing of 24 inches. Adhesives must meet APA Specification AFG-01 or ASTM D3498. Reduce spans by 1 foot when floor sheathing is nailed-only.



Lightweight, Easy to Specify & Install!

Perma-Straight I's are the ideal choice for high-quality residential floor systems. They offer designers and builders consistent performance for the most demanding applications.

Perma-Straight I's offer longer lengths that give designers the freedom to design more open space into their project, reducing the need for supporting walls, columns, and beams.

Builders like them because they allow multiple span installations without the need to lap joists over bearing walls or support beams—saving time and money. Webs are easily cut onsite for mechanical pass through. There are

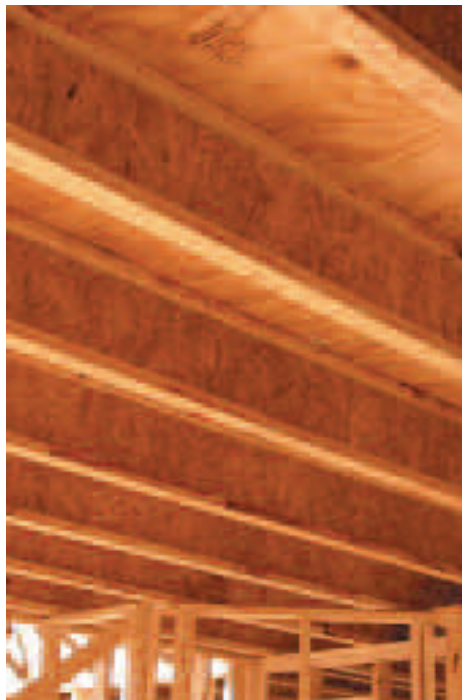
fewer pieces to handle, and Perma-Straight I's can be cut and fastened with traditional framing tools and fasteners. Plus, they weigh much less than comparable conventional lumber!

Framers appreciate the extra-wide nailing flange; 2-1/2" or 3-1/2", compared to other manufacturers' 1-1/2" width.

Perma-Straight I's won't warp, twist or shrink, and offer more uniform dimensions than sawn lumber joists.

The Choice of Designers, Builders & Framers!

Look for the APA/EWS Trademark. It ensures superior I-joist quality & consistent performance...



Product Warranty

Perma-Straight I's are warranted to be free from manufacturers' defects or errors in workmanship and material in accordance with our specifications. Furthermore, when correctly installed Perma-Straight I's will meet or exceed their design specifications for the normal life of the structure.

APA Quality Assurance

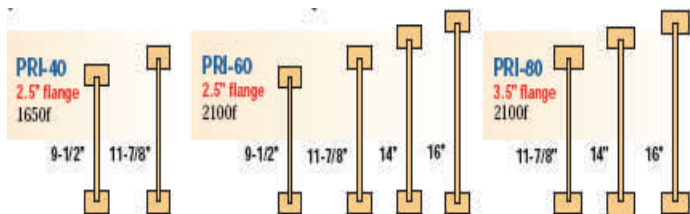
All Perma-Straight I's are produced in accordance with the American plywood Association (APA) and Engineered Wood Association (EWS) Performance Rated I-joist Standard that was introduced in 1997. The APA/EWS standard provides a span rating system for I-joists used in residential construction. All APA Performance Rated I-joists, or

PRIs have common load/span tables (see chart below), uniform rules and guidelines for installation, and consistent engineering design values. Span ratings are stamped right on the product, and for code officials to inspect. The stamp tells how far the joist will span at a given spacing for uniform load applications

All Perma-Straight I products are warranted to be free of manufacturing defects, and to meet or exceed the design specifications noted for that product.

The APA trademark ensures

superior I-joist quality and consistent performance. Each Perma-Straight I product will conform to the standards set by APA's quality assurance program.



Perma-Straight I Manufacturing Facility

Perma-Straight I

6855 Chestnut Ridge Road
Beach City, OH 44608

888.756.6779 • Fax 330.756.2255

Distributed by

